

Photo by Rodrigo Robles

Objective

River Restoration for Climate Change Adaptation (RÍOS) is the first project submitted by Mexico to the Green Climate Fund (GCF). It seeks to increase the adaptive capacity of people and ecosystems in watersheds vulnerable to climate change through river restoration.

RÍOS is financially supported by a GCF grant and complementary funding from the CONECTA Project, financed by the Global Environment Facility (GEF). The project will be implemented during 2021-2026 and is in charge of the National Accredited Agency, the Mexican Fund for the Conservation of Nature, A.C. (FMCN, acronym in Spanish), with the technical leadership of the National Institute of Ecology and Climate Change (INECC, acronym in Spanish), and two regional funds as executing entities: Gulf of Mexico Fund (Fondo Golfo de México, A.C.) in Veracruz; and FONNOR, A.C. (the Northwestern Fund), in Jalisco.



Map: States where the RÍOS project operates.

Components

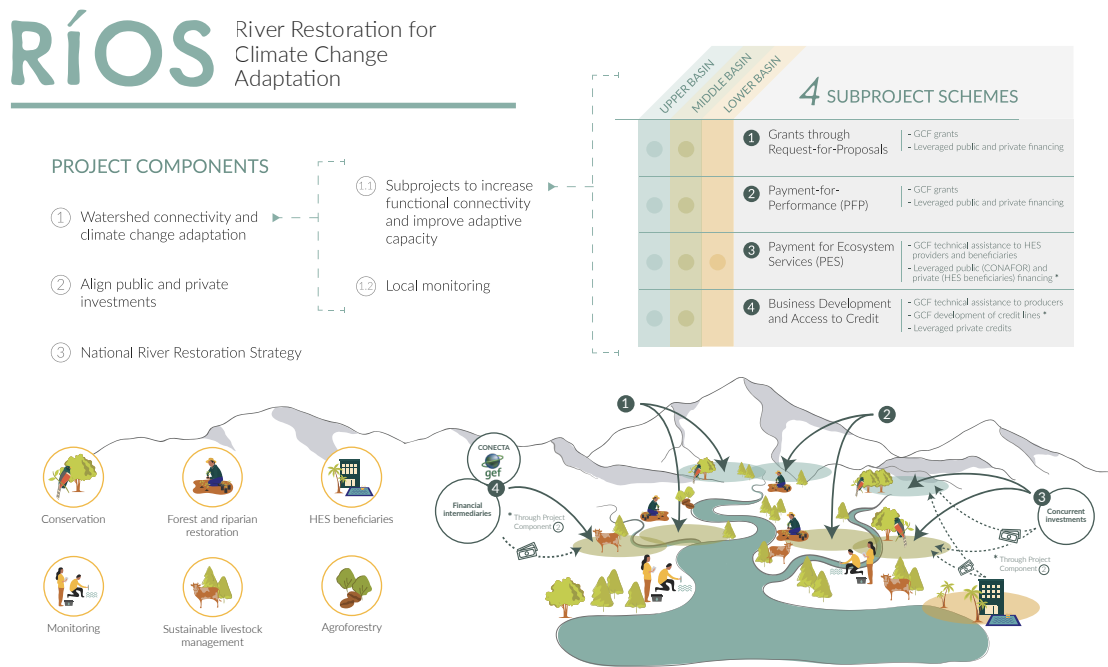
1 Increase forest and water connectivity with a vision of adaptation to climate change through restoration, conservation, and better production practices. This component strengthens the capacities of local communities along the Ameca-Mascota watersheds in Jalisco and Jamapa in Veracruz to carry out activities that promote ecosystem-based adaptation through functional river connectivity. INECC has identified actions needed to reduce vulnerability to climate change through Integrated Watershed Action Plans (IWAP) built with local stakeholders. This component is implemented through subprojects financed with GCF resources and executed by selected local organizations to work with producers in the field and increase their capacities in the rehabilitation and restoration of forests along rivers; protection and conservation of forests; as well as the adaptation of productive activities that promote connectivity for restoration (agroforestry and sustainable livestock management). These subprojects comprise a portfolio of four types of schemes depending on the nature and objective of the activity: grants through request for proposals, pay for performance public-private payment for ecological services (PES), and enterprise



development and access to credit. The project increases local monitoring capacities to assess and reduce vulnerability to climate change. RÍOS adapts existing methodologies to assess the vulnerability of communities in the project watersheds on an ongoing basis and to monitor the provision of ecosystem services (biodiversity, soil, and water quality). It provides subprojects with technologies and assistance to understand vulnerability and monitor project benefits and co-benefits. The project also has a "learning community" to exchange local experiences among beneficiaries and collaborate with national and regional actors to coordinate activities and achieve watershed connectivity.

2 Aligning public and private investments through natural capital valuation to scale river restoration for climate change adaptation. The project implements coordination activities to align public and private contributions to scale up best practices. This is achieved through the alignment of local and national public programs related to restoration and adaptation, linking national opportunities with local needs. The project also contributes to an enabling environment for accessing dedicated lines of credit for sustainable and climate-resilient productive practices in livestock and agroforestry systems through enhancement and development.

3 Design the guidelines of the National River Restoration Strategy (ENRR, acronym in Spanish) for climate change adaptation. Under the leadership of INECC, this component supports the design of the ENRR to strengthen climate change adaptation. It identifies relevant stakeholders for the design; establishes a Design Committee and its institutional arrangements; incorporates lessons learned from the intermediate results of components 1 and 2; develops workshops to define objectives, scope and guidelines for the ENRR. This component works with public officials and legislators to define the legal framework within which the ENRR is framed.



Contact

Sergio López
 Director of Sustainable Management,
 FMCN
sergio.lopez@fmcn.org

Ana Fernández
 Coordinator of Integrated Landscape
 Management of RÍOS, INECC
ana.fernandez@inecc.gob.mx



GOBIERNO DE
MÉXICO

MEDIO AMBIENTE
 SECRETARÍA DE MEDIO AMBIENTE Y RECURSOS NATURALES

